

BARREL VALVES

Our valves feature 3 AN female nozzle hose ports that are spaced apart for good wrench clearance. All feature a High-Flow distribution cavity with a removable o-ring plug. Can be installed on most Hilborn, Engler, Crower, and Ron's manifolds either as a direct bolt-on or using a Kinsler mounting adapter. These barrel valves are made from 6061-T6 billet aluminum, then hard anodized for protection from corrosion by methanol.

BARREL VALVE ASSEMBLIES

Arms and inlet fittings sold separately

Part # of Complete Assembly	Part # of Block Only	Model	Description
3501	3590	ALH	8-port, high flow, nozzle ports exit out of the sides, left hand spool rotation, bottom mount
3502	3591	ARH	8-port, high flow, nozzle ports exit out of the sides, right hand spool rotation, bottom mount (this is the standard unit on Kinsler small block Chevrolet manifolds)
3561	3571	ARH-XL	Same as #3502, Xtra-Light is .25 lb less than ARH
3510	3599	ARH-P	Same as #3502 with two 6 AN female ports on front and rear of distribution cavity, bottom mount
3511	3574	ALH-P	Same as #3501 with two 6 AN female ports on front and rear of distribution cavity, bottom mount
3503	3592	BLH	8-port, high flow, nozzle ports exit front and rear, left hand spool rotation, bottom mount
3562	3572	BLH-XL	Same as #3503, Xtra-Light is .25 lb. less than BLH
3566	3586	BLH-T	Same as #3503, with two 1/4" mounting holes through side of block, side and/or bottom mount
3504	3593	BRH	8-port, high flow, nozzle ports exit front and rear, right hand spool rotation, bottom mount
3563	3573	BRH-XL	Same as #3504, Xtra-Light is .25 lb. less than BRH
3508	3597	CLH	16-port, high flow, four nozzle ports exit each side, left hand spool rotation, bottom mount
3509	3598	CRH	16-port, high flow, four nozzle ports exit each side, right hand spool rotation, bottom mount
3564	3575	CRH-XL	Same as #3509, Xtra-Light is .3 lb. less than CRH
3505	3594	PLH	4-port, high flow, two nozzle ports exit front and rear, left hand spool rotation, side mount
3506	3595	PRH	4-port, high flow, two nozzle ports exit front and rear, right hand spool rotation, side mount
3507	3596	D	Mono-port, 6 AN female inlet and outlet ports, side mount

NOTE : When ordering a barrel valve, specify make and style of manifold, barrel valve spool shaft rotation*, fuel being used, and type of racing.

Our barrel valve assembly comes with a standard Kinsler spool, secondary outlet fitting, and mounting bolts.

The throttle arm and inlet fitting are ordered separately.

Optional spools are ordered as an Upgrade.

* Rotation:

Right hand - looking at the end of the spool shaft (the screw driver slot end), it rotates clockwise from idle to wide open throttle.

Left hand - looking at the end of the spool shaft (the screw driver slot end), it rotates counterclockwise from idle to wide open throttle.

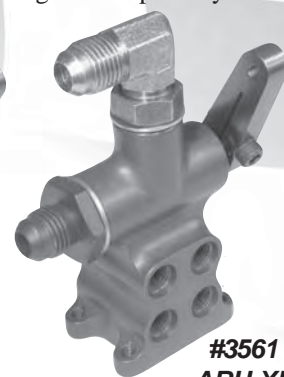
TERMINOLOGY

Mounting Orientation: Barrel valves are usually mounted on individual runner manifolds so that the secondary outlet fitting points toward the front of the engine, so the spool shaft protrudes toward the rear. Kinsler bottom mount barrel valves have 10-32 threaded mounting holes in their base. Side mount has .170" clearance holes for #8 attaching bolts, except BLH-T/BRH-T which have .250" clearance holes.

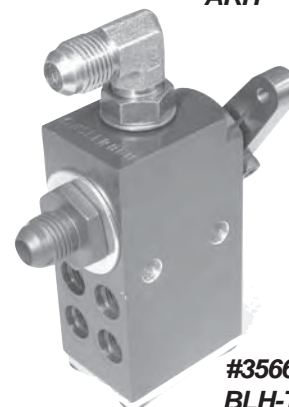
Nozzle Line Ports: Side exit refers to ports pointing towards valve covers of V8 engine. Front and rear exit refers to ports pointing towards the front and rear of a V8 engine.



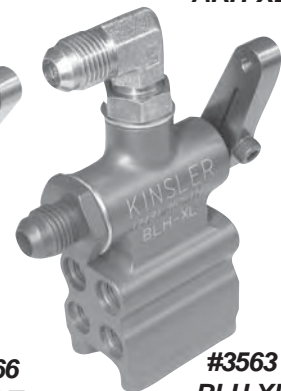
#3502
ARH



#3561
ARH-XL



#3566
BLH-T



#3563
BLH-XL



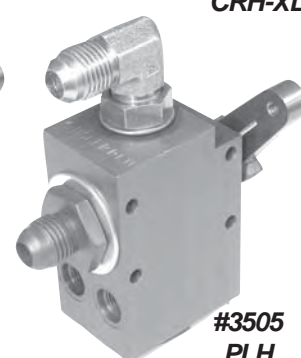
#3509
CRH



#3564
CRH-XL



#3510
ARH-P



#3505
PLH

© 2008



#3507
D